



## Instructions for Baking & Decorating Elmo Cake

PLEASE READ THROUGH INSTRUCTIONS BEFORE YOU BEGIN. IN ADDITION, to decorate cake you will need:

- Wilton Decorating Bags (Featherweight and/or Disposable Plastic) and couplers or Parchment Paper Triangles (instructions included with all bags).
- Decorating tips 3, 16, 21.
- Wilton Icing Colors in Golden Yellow, No-Taste Red, Black, Brown, Sky Blue, Orange, Rose.
- Cake Board and Fanci-Foil Wrap or serving plate.



Wilton Method Cake Decorating Classes  
Call: 800-942-8881

© 2001 Wilton Industries, Inc.  
Woodridge, IL 60517  
www.wilton.com

Stock No. 2105-4298

© 2001 Sesame Workshop. Sesame Street and its logo are trademarks of Sesame Workshop. All rights reserved.

### Baking Instructions

Preheat oven to 350°F or temperature per recipe directions. Your cake will unmold easily, without sticking, when you prepare the pan properly. Grease the inside of pan using a pastry brush and solid vegetable shortening (do not use butter, margarine or liquid vegetable oil). Spread the shortening so that all indentations are covered. Sprinkle about 2 Tablespoons flour inside pan and shake so that flour covers all greased surfaces. Turn pan upside down and tap lightly to remove excess flour. If any shiny spots remain, touch up with more shortening and flour to prevent cake from sticking. (You can use vegetable oil pan spray or vegetable oil pan spray with flour, in place of solid shortening and flour, or use **New Wilton Cake Release**, for perfect, crumb-free cakes!) Make one 2-layer cake mix according to package or recipe directions. Pour the cake batter into pan, and if necessary, spread the batter around with a spatula to fill all areas of the pan evenly. Be careful not to touch sides or bottom of pan. Bake cake on middle rack of 350°F oven for 30-40 minutes or until cake tests done according to recipe directions.



Remove cake from oven and cool on cake rack for 10 minutes. While the cake is still in the pan, carefully slice off the raised center portion of the cake. This allows the cake to sit more level and helps prevent cracking. To remove cake from pan, place cooling rack against cake and turn both cake rack and pan over. Lift pan off carefully. Cool cake at least one hour. Brush loose crumbs off cake.

To transfer cake to serving board, hold a cake board against cake and turn both cake and rack over. Lift off rack. Hold another board against bottom of cake and turn cake over. Be sure to hold cake, rack and board close together while turning to prevent cake from cracking.

### To Decorate Elmo You'll Need

Make 5 3/4 cups buttercream icing:

- Tint 1 cup red
- Tint 1/2 cup yellow (thin 1/4 cup with 1/4 teaspoon light corn syrup)
- Tint 1/2 cup black
- Tint 1/4 cup brown
- Tint 1/4 cup blue
- Tint 1/2 cup orange
- Tint 1/2 cup lt. rose
- Reserve 2 1/4 cups white (thin 1 cup with 1 tablespoon light corn syrup)

### Decorate in numerical order:

1. Using thinned white icing, ice cake sides and background areas smooth.
2. Using thinned yellow icing, ice package smooth.
3. Use tip 3 and black icing to add outlines; outline and pipe in mouth (smooth with finger dipped in cornstarch).
4. Cover Elmo with tip 16 red stars.
5. Cover ice cream cone and stripes on hat with tip 16 yellow stars
6. Cover remaining stripes on hat with tip 16 orange stars.
7. Cover hat brim with tip 16 blue stars.
8. Cover bow with tip 16 lt. rose stars; add tip 21 lt. rose rosettes to hat pom-pom.
9. Use tip 3 and pipe brown ice cream; smooth with finger dipped in cornstarch.
10. Use tip 3 for the following: Pipe white ice cream; smooth with finger dipped in cornstarch. Pipe white dot eyes, building up for dimension, shape with finger dipped in cornstarch.
11. Use tip 3 and pipe black dot eye centers.
12. Use tip 3 and pipe orange dot nose, building up for dimension; shape with finger dipped in cornstarch.
13. Use tip 3 and pipe red dot cherry, building up for dimension; shape with finger dipped in cornstarch.
14. Edge bottom border with tip 21 white shells.
15. Use tip 3 and pipe black outline name.



### Cake Release

For perfect, crumb-free cakes!

No need to grease and flour your baking pan - Cake Release coats in one step. Simply spread Cake Release lightly on pan bottom and sides with a pastry brush and fill with batter. Cakes release perfectly without crumbs every time, giving you the ideal surface for decorating. Now in convenient dispensing bottle. Certified Kosher. 8 oz. 702-6016



## For more Decorating Techniques & Tips

Visit our website at [www.wilton.com](http://www.wilton.com) -

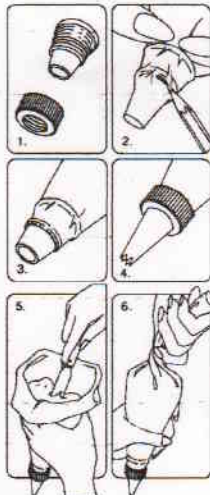
Learn To Decorate - Basic Decorating Lessons.

### Using Your Decorating Bag and Coupler

You can make many different designs with just one decorating bagful of icing by using the Wilton Featherweight or Disposable Decorating bags and coupler and changing decorating tips.

Just follow these steps:

1. Screw ring off coupler to expose series of tiny threads 1/2 in. above coupler base.
2. Force coupler base as far down into decorating bag as it will go. Then mark where bottom thread of coupler shows through bag; remove coupler and trim bag at pencil mark with a pair of scissors.
3. Reposition coupler in bag and push end through opening to expose bottom two threads.
4. Position decorating tip over coupler and screw ring in place to secure. To change tips, unscrew ring, replace tip and replace ring.
5. To fill, cuff open end of bag over your hand and insert icing with a spatula. Fill bag no more than half full.
6. To close, unfold cuff and twist top of bag shut. Hold twist between your thumb and forefinger. Note: You can eliminate any air bubbles that may have formed by squeezing bag gently over icing bowl until air is released. Important: Be sure to wash the Featherweight bag in hot soapy water, then rinse and dry after every use. A degreaser can make clean-up easier.



### Using Parchment Bags

Parchment bags made from parchment paper triangles give you more versatility and the convenience of one-time use. Follow package directions. To "pipe-in" using a cut parchment bag, cut the point of the bag to desired opening.

### Decorating With Wilton Icing

**Wilton Frosting Mix:** You will need 2-3 packages of Creamy White Icing Mix. To prepare, follow package directions. Each package makes about 2 cups icing. Excellent for tinting any shade required. If you're using another type of frosting mix, you will need three 15.4 oz. packages of the creamy vanilla type that will frost two 8 in. or 9 in. layers. For each package of frosting mix, use four less teaspoons water than package directs. Each package makes about 1 3/4 cups icing. Do not refrigerate icing before decorating. Cake may be refrigerated after it is iced.

**Wilton Ready-to-Use Decorator Icing:** You will need approximately 2-3 cans of our delicious white icing. Each 16.5 oz. can holds about 2 cups. It's ideal for all of your decorating needs - frosting, decorating and flower making.

### Making Buttercream Icing

The thick, but creamy texture of this flavorful icing makes it ideal for decorating\*. For best results, keep icing bowl in refrigerator when not in use. It can be refrigerated in an airtight container for up to 2 weeks. Rewhip before using. YIELD: 3 CUPS.

1/2 cup solid vegetable shortening	2 tablespoons milk
1/2 cup butter or margarine	1 tsp. Wilton Clear Vanilla Extract
4 cups (1 lb.) sifted confectioners' sugar	

Cream butter and shortening with electric mixer. Add vanilla. Gradually add sugar, one cup at a time, beating well on medium speed. Scrape sides and bottom of bowl often. When all sugar has been mixed in, icing will appear dry. Add milk and beat at medium speed until light and fluffy.

\*To thin for icing cake, add a medium amount of light corn syrup.

### Coloring Your Icing

Wilton Icing Colors are best for decorating because they are concentrated and give the deepest, most vivid icing colors. Use a toothpick to swirl icing color into icing, then mix well. Add color gradually until you get the icing color you desire.

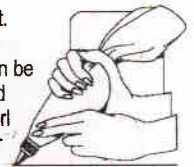
### Icing Smooth With A Spatula

With a spatula, place icing on cake. Spread icing over area to be covered. For a smooth effect, run spatula lightly over the icing in the same direction, blending it in for an even look. For a fluffy effect, swirl icing into peaks using the edge of the spatula.



## Let's Practice Decorating

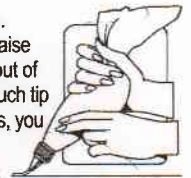
Use decorating bag and coupler as directed in this booklet. Practice each of the following techniques on the back of a cookie sheet with white icing. The practice decorations can be scraped off the cookie sheet back into the mixing bowl and rewhipped for use again. To hold bag while decorating, curl fingers around bag with the end twist locked between your thumb and index finger. This forces the icing down into the tip each time you squeeze. Apply an even pressure with all four fingers and icing will come out of the tip until you stop squeezing. As you decorate, periodically twist the bag down further, forcing the icing down into the tip. Use fingers of other hand to guide as you decorate.



For more about decorating, refer to the Wilton Yearbook of Cake Decorating.

### To Make Outlines

Use tip 3. Hold bag at a 45° angle and touch tip to surface. Squeeze at starting point so that icing sticks to surface. Now raise the tip slightly and continue to squeeze. The icing will flow out of the tip while you direct it along surface. To end an outline, touch tip back to surface, stop squeezing and pull away. If icing ripples, you are squeezing bag too hard. If icing outline breaks, you are moving bag too quickly or icing is too thick.



### To Outline & Pipe-In

After outlining, using the same tip, squeeze out rows of lines to fill area. Pat icing down with fingertip dipped in cornstarch or smooth with dampened art brush.



### To Make Stars

Use tip 16 or 21. Hold bag straight up and down (see illustration) with tip 1/8 in. above surface. Squeeze until a star is formed, then stop pressure and pull tip away. Your stars will be neatly formed only if you stop squeezing before you pull the tip away.



### To Make Shells

Use tip 21. Hold decorating bag at a 45° angle, slightly above surface with end of bag pointing towards you. Squeeze until icing builds up and fans out into a base as you lift tip slightly. Relax pressure as you lower tip until it touches surface. Stop pressure and pull tip away without lifting tip off surface to draw shell to a point. Practice this procedure until you can produce a clean shell shape. To make a row of shells, rest head of one on tail of preceding shell. For larger shells, increase pressure; for smaller shells, decrease pressure.



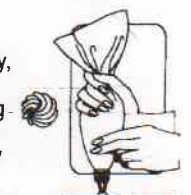
### To Make Dots

Use tip 3. Hold bag at 90° angle with tip almost touching surface. Steadily squeeze out a dot of icing, lifting the bag slightly and keeping tip in icing as it builds up into a small mound. Then stop pressure and pull tip away. Vary size of dots by lengthening the amount of time you apply pressure to the bag.



### To Make Rosettes

Use tip 21. Hold decorating bag straight up with tip 1/8 in. above surface. Squeeze and hold tip in place momentarily, then move tip around to the right using a short circular motion. Stop pressure just before reaching original starting point and pull tip away.



## Wilton Method Decorating Classes

Discover The Fun of Cake Decorating!

### Find Classes Near You!

In U.S.A., Call 800-942-8881 Or visit our website at [www.wilton.com](http://www.wilton.com)  
In Canada, call (416) 679-0790 x200 Or E-mail: [classprograms@wilton.ca](mailto:classprograms@wilton.ca)

